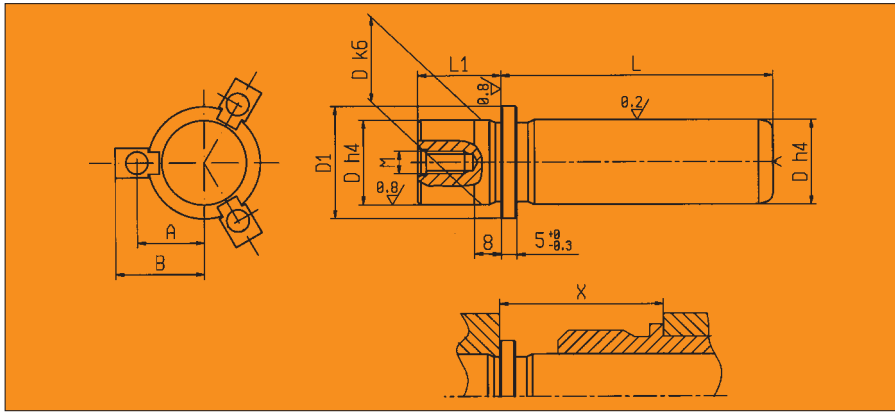
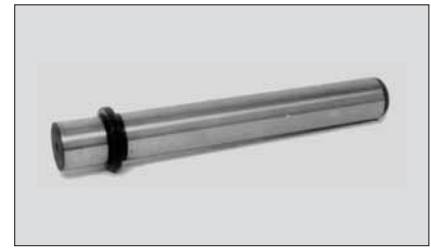


# Colonne estraibili / Extractable pillar

Adatte per scorrimento con Acciaio - Bronzo - Gabbie a sfera / Suitable to be used with Steel - Bronze - Spherical cages



# ECO-7



**Acciaio:** UNI C 53

**Durezza:** in superficie 60-63 HRC - Resistenza al cuore 1000/1050 N/mm<sup>2</sup>

**Steel:** UNI C 53

**Hardness:** 60-63 HRC on surface, resistance at the core 1000/1050 N/mm<sup>2</sup>

**Esecuzione:** temperate per induzione, rettificate, lappate, ogni colonna è corredata di 3 staffette con viti.

**Execution:** hardened for induction, grinded, lapped, each column is provided of three clamps with screws.

D	Ingombro/Encumbered		n° staffe/clamps	Viti per fori di fissaggio Screws for fixing hole	M
	A	B			
18/19	17,1	24,6	3	M8 x 20	8 x 1,25
24/25	20,8	28,3	3	M8 x 20	10 x 1,5
30/32	26	33,5	3	M8 x 20	10 x 1,5
40/42	30,5	38	3	M8 x 20	12 x 1,75
50/52	37	44,5	3	M8 x 20	12 x 1,75
63	43	50,5	3	M8 x 20	12 x 1,75

D	D1	X min.			L	L1
		Lunga/Long	Media/Medium	Corta/Short		
18/19	25	43	33	24	70	18
					80	
					90	
					100	
					110	
					120	
					130	
					140	
					150	
					160	
24/25	32.4	64.5	43.5	24.5	70	24
					80	
					90	
					100	
					110	
					120	
					130	
					140	
					150	
					160	
30/32	42.8	68.5	45.5	24.5	100	30
					110	
					120	
					130	
					140	
					150	
					160	
					170	
					180	
					200	

D	D1	X min.			L	L1
		Lunga/Long	Media/Medium	Corta/Short		
40/42	51.8	81.5	48.5	24.5	100	37
					110	
					120	
					130	
					140	
					150	
					160	
					170	
					180	
					200	
50/52	64.8	86.5	51.5	24.5	110	45
					120	
					130	
					140	
					150	
					160	
					170	
					180	
					200	
					220	
63	76.8	93.5	53.5	24.5	120	49
					140	
					160	
					180	
					200	
					220	
					240	
					280	
					320	
					400	

Esempio di ordinativo: D x L

